



Penreach

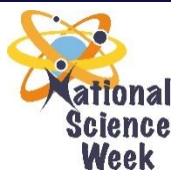
NEWSBYTE

NATIONAL SCIENCE WEEK

7-12 AUGUST
2017

PENREACH SHALAMUKA
SCIENCE CENTRE

ADVANCING SCIENCE IN
TOURISM



science
& technology
Department:
Science and Technology
REPUBLIC OF SOUTH AFRICA



SAASTA
South African Agency for Science
and Technology Advancement



From the CEO's desk

The launch of National Science Week 2017, on 5 August could not have happened at a more iconic venue than the Nelson Mandela University, Missionvale Campus.

Other than attendance by more than 3500 learners and 80 exhibitors, the launch truly demonstrated, through science, our need to strive to develop a better understanding of the universe while at the same time, encouraging us to solve real-life problems of the poorest of the poor so that all our people can have a better place under the sun.

We were privileged to demonstrate to the Minister of Science and Technology and thousands of learners our small contribution in this endeavor, with the support of Bayer through their provision of the Baylab, a fully equipped mobile lab that helps schools to conduct experiments that are aligned to CAPS, as well as to improve science awareness among children at crèches and the community at large.

Andile Ncontsa

"Penreach is one of our unique Science Centres in that the mobile labs go to the schools every day, providing much needed resources and expertise doing experiments that are CAPS aligned."

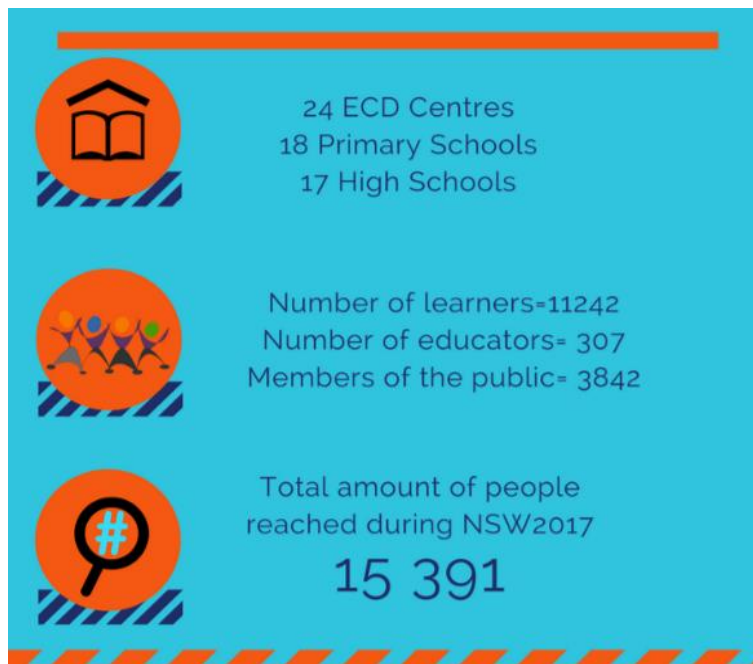
**- Mrs Naledi Pandor, Minister,
Department of Science and
Technology.**



ADVANCING SCIENCE TOURISM

NSW is a countrywide celebration of Science, Technology, Engineering, Mathematics and Innovation, (STEMI) that exposes the public and learners to the wonders of science. In its 18th year, NSW coordinated by SAASTA (South African Agency for Science and Technology Advancement) on behalf of the Department of Science and Technology, celebrates a week of national science celebrations. Penreach is one of over 90 organisations (including 3 National Research Foundation facilities, 2 science councils, 24 science centres, 5 universities and 59 other organisations) bringing the world of science to the South African public during #NSW2017.

This year, Penreach showcased what it can offer when it comes to science tourism. The theme encouraged many discussions about South African tourism and its link to science in natural diversity.



PENREACH NATIONAL SCIENCE WEEK ACTIVITIES

- Science Shows
- Science Exhibition
- Maths Games
- Nature Trail
- Field Excursion to the Lowveld Botanical Gardens
- Falconry
- Career Talks
- EV Viewing and Demo

"The 2017 NSW made our learners to realize that most classroom content can be so much fun, which further assisted them to inculcate the love of science, which is actually driven by an intrinsic motivation to excel in science and therefore encouraged to pursue careers in science and technology."

-Nyalunga Tami, Educator from Khetsalwati Secondary School.



▶ Watch our interview with Lowveld Botanical Gardens Environmental Officer, Simphiwe Ngwenya. <https://www.youtube.com/watch?v=aSkIx95i30Y>

PENREACH ECD ~ SCIENCE WEEK



24 Penreach ECD centre's attended NSW 2017



4 year old, Success Nkosi from Penreach ECD centre, Entabamthlope.

Here, Success partakes in one of the many activities of #NSW2017, as he learns about measurement.

Children who have a broad base of experience in domain-specific knowledge like science move more rapidly in acquiring skills that are more complex.



Watch Success explain his understanding of measurement at the age of 4 years:

<https://www.youtube.com/watch?v=aR5OEEPrnzc>

ECD NATIONAL SCIENCE WEEK ACTIVITIES

- Happy Puppets Show
- Science Sparks Show
- Science Rocks Exhibits
- Lego Adventure Demonstration
- Mascot Booth Storytelling with Chris Daniel, (Author of Book; Bongi's Quest.)
- Interaction with Penryn Falconry



A special thanks to our Penreach Partners



NSW went social!

Being a partner in NSW 2017 meant Penreach was part of the national conversation taking place on social media too.



Penreach contributed to the #NSW2017 conversation along with other organisations from around the country. Every day Penreach focused on a different activity happening at Penreach Shalamuka Science Centre, with the engagement of @NRF_SAASTA @dstgovza and #NSW2017.



Penreach @penreach

Advancing Science through Tourism at the Lowveld Botanical Gardens for #NSW2017 🌿



@NRF_SAASTA @RiversideParkP

@dstgovza @SANParks

pic.twitter.com/qacNS7U9jh



f Our top liked Facebook post was in celebration of the start of NSW 2017.
<https://www.facebook.com/PenreachNGO/posts/1422638374485807>

ig Our best performing Instagram post during the campaign: https://www.instagram.com/p/BXZzDn2BLul/?hl=en&taken-by=penreach_ngo

penreach_ngo
 Port Elizabeth, Eastern Cape

penreach_ngo Future scientists explore the #Penreach exhibition at #NSW2017 launch.
 @sa_sciencelens @dstgovza
 #SASciWeek 📷



Connect with us and view more of the NSW2017 action

Email: penreach@penryn.co.za
 Website: www.penryn.co.za/pages/penreach
 Tel: 013-7589092

